

# evo<sup>®</sup>

## mane straight™

*tame the strays*

### icon welder hot tool shaper

a thermal spray to protect hair from hot tools/humidity and help provide control.

- hold factor 3



- shine factor 3



#### how to use.

spray on individual sections of dry hair before using hot tools, repeat this process section by section

#### results.

hair is protected from damage, hair is left smooth and holds its shape.

#### recommended for.

protecting hair from hot tools and humidity; improving manageability of hair; calming frizziness and fly away; late night bbqing sessions.

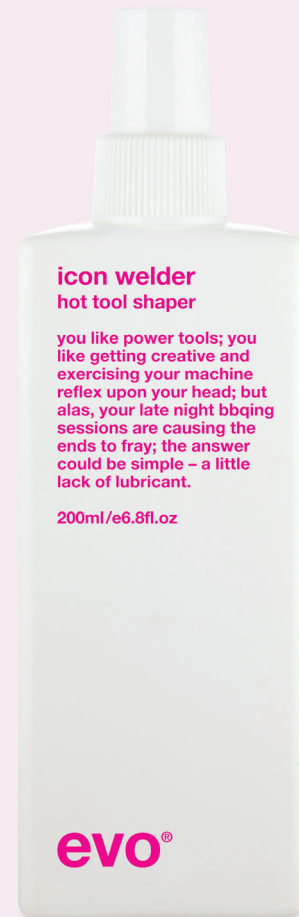
#### features and benefits.

vp/dmap/acrylates copolymer - polymer coats hair adding fullness and body; benzophenone-4 - ultraviolet light absorber, protects hair from sun damage; propylene glycol - conditions and moisturizes; ethanol denat - aids quick drying.

#### size.

200ml

PH: 5 – 5.5



evo<sup>®</sup>